

## SUBPRO2545 Sub Bottom Profiler

**Portable Sub Bottom Profiler with best in class resolution and sediment penetration for shallow and ultra shallow waters**

- **Very compact size and low weight of system & transducer.**
- **Suitable for small vessels like ASV, ROV and remote controlled vessels with small payload.**
- **Complete measuring system and easy to integrate in survey systems.**
- **Suitable for all sizes of survey-vessels or ships as a portable or in-hull mounted system.**

The 25 to 45 kHz transmit frequency and transmit power is user selectable and can be adapted to specific applications. For example for soft sediment, sediment transport applications and upper layers of top sediment. Additionally, the high resolution capability of the system enables an outstanding detection of embedded objects. Optional additional receiver for even higher spatial resolution and ultra shallow water surveys (starting at 0.5m).



**Specifications:**

**System:**

- For ultra shallow water survey starting at 0.5 m water depth
- Frequency: 25 to 45 kHz
- Transmit Power: up to 2 KW peak (optionally 4 kW peak)
- Ping duration: 80 µs to 1 ms
- Ping rate: up to 20 Hz
- Dynamic Range: 160 dB
- Technical internal resolution: 1 mm
- Vertical resolution: 5 cm
- Penetration: more than 15 m (depending on material)
- Power Supply: 24 VDC (optional 230 VAC - only in 19" housing)
- Power consumption: 60 W
- Controller dimensions (L x W x H) : 33 x 23 x 15 cm
- Controller weight: 8.5 kg
- SUBPRO-Studio software: Windows compatible, raw data logging and real time post-processing and re-processing. Data conversion to SEG-Y (Hypack ready). GPS (NMEA) input.

**Transducer:**

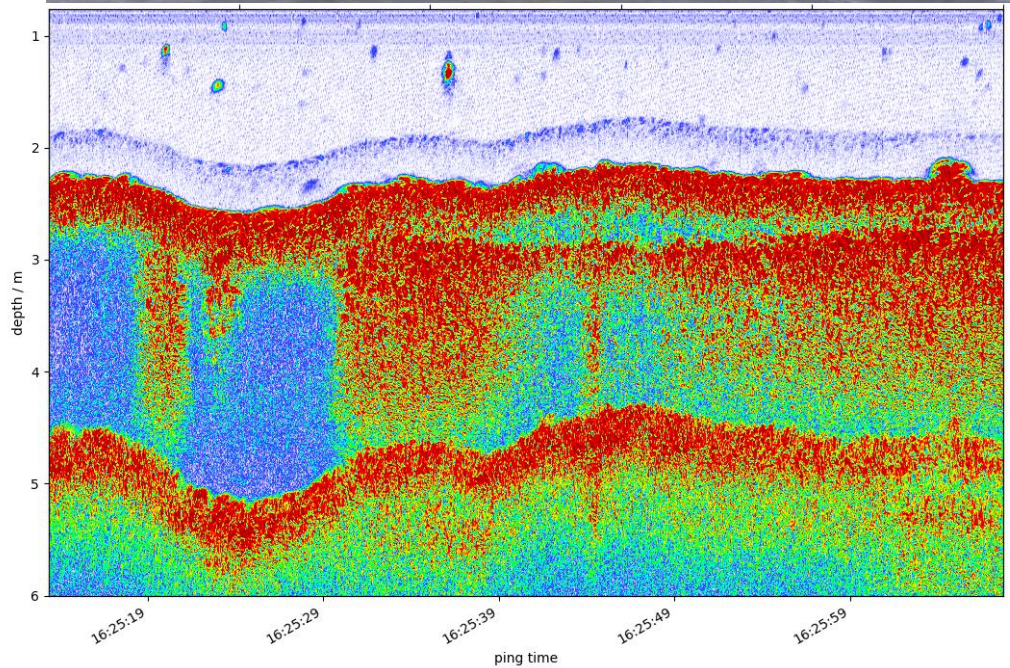
- Broadband, narrow beam
- Frequency: 25 to 45 kHz
- Beam Angle: 9° at 25kHz, 6° at 45 kHz (Ø 200 mm) , 6° at 25 kHz, 4° at 45 kHz (Ø 30 cm)
- Dimensions (diameter x height) : 20 x 15 cm (optional 30 x 14 cm)
- Weight: 8 kg (18 kg for Ø 30 cm)
- Cable Length: 1m (longer on request)
- Optional separate receiver dimensions (L x W x H): 10 x 10 x 2 cm



**System components include:**

- One high quality narrow beam, broad band transducer 25 to 45 kHz for in-hull installation or over-the-side operation.
- SUBPRO-System in IP65 housing (optional 19" housing for 230VAC version).
- Integrated controller for triggering, transmitting, receiving, amplifying and processing of signals, pps-module for time synchronisation, power supply. System control and realtime coloured graphic display via external or in-boat PC (not included).
- User friendly Windows Operating Software SUBPRO-Studio incl. raw data logging and real time post/re-processing.
- Transducer cable.

Survey with SUPRO2545 mounted on [Seafloor Systems EchoBoat](#) . Data measured with 45kHz pings at the Schwentine river in Kiel. River depth is 2 to 3 meters.



General Acoustics can provide the SUBPRO2545 integrated in various ASV and other vessels. Speak to us about your measurement goals and we can suggest a suitable platform including remote control, positioning and communications systems.

