

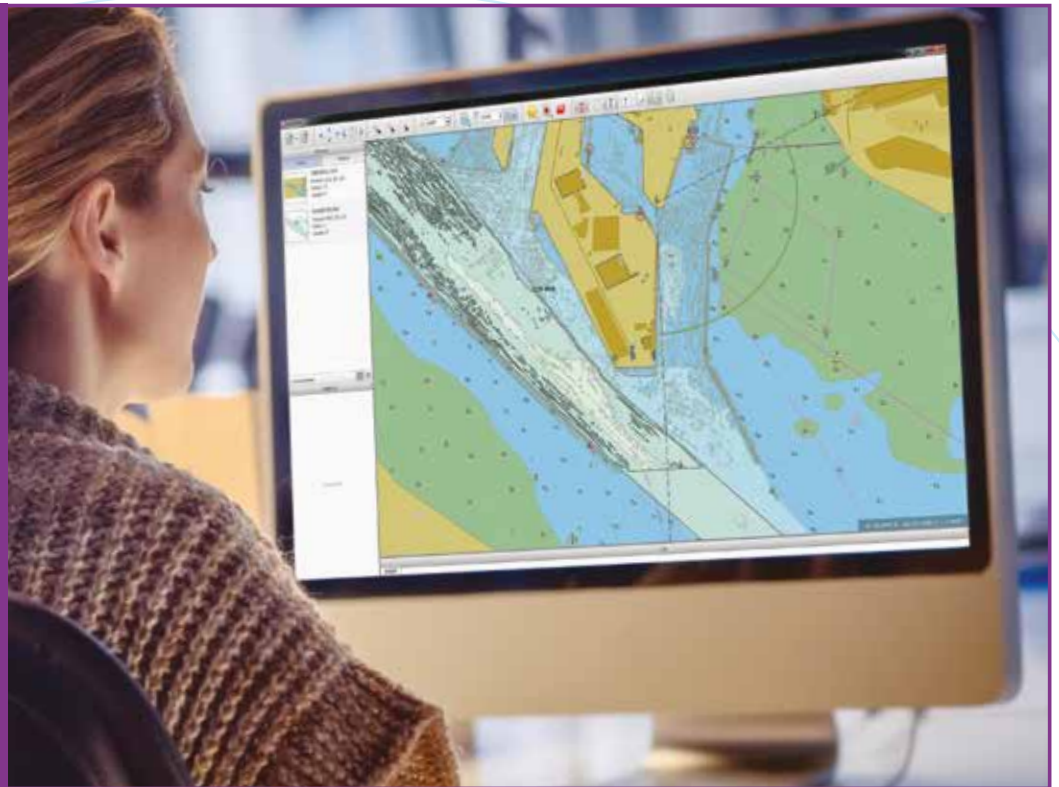
# ENC WRITER

## Easily create Bathymetric and Port ENCs

(an extension to Maritime Toolbar)

### KEY BENEFITS

- Produce your own high resolution ENCs
- Share/view critical data via your PPU's or VTS
- Work with the latest hydrographic data during pilotage
- Avoid duplication by using an integrated system
- Reduce risk and increase confidence in operational decision making
- Save time and provide clearer insight by creating in-house ENCs



Our **Electronic Navigational Chart (ENC) Writer** is designed to support pilots and other marine operators who require comprehensive, high resolution datasets on which to deliver safe and efficient port and maritime operations.

### Why do we need better ENCs?

As vessels get larger and ports expand, the margin for error is reducing whilst the requirement for better, highly detailed ENCs is increasing. Standard published ENCs will not necessarily contain the latest survey data, they may also lack important features (such as port installations and bollards) and do not contain high levels of detail on topography, depth areas, soundings or contours.

Our **ENC Writer** allows you to create your own ENCs within hours of receipt of the latest survey data, ensuring that all users are getting the most up-to-date and accurate information. By including additional local information your ENC is customised and will show the most relevant information for you. Clearer and more detailed ENCs allow deeper insight, reduced risk and increased confidence.

The ENCs produced can easily be shared with other maritime applications, such as Pilots for use in their Portable Pilotage Units, or in your VTS System.

“ Having the Port ENC available on the PPU display was vital in making real time decisions in an ever changing situation. ”

*M Green, Tees Bay Pilot*



**Create Bathymetric & Port ENCs easily  
within an integrated system**

Our **ENC writer** is an extension to **OceanWise's Maritime Toolbar**, a suite of software tools which improve and support common operational processes within ports and other coastal authorities.

For more details on **Maritime Toolbar** and our other workflow extensions please visit [www.oceanwise.eu/software](http://www.oceanwise.eu/software).

Other extensions available: Dredging and Licencing Management, Hydrographic Survey Management, Environmental Samples Management & Remote Object Based Image Analysis.

The **ENC Writer** extension was developed in collaboration with our Licenced Partner and S-57 expert, Geomod.



Example compatible device/software:  
SafePilot-Trelleborg Marine Systems

## Don't have access to GIS or the in-house expertise to produce ENC's?

Outsource it to us! If you have a critical project/operation or have an ongoing requirement you can outsource your GIS requirements to us.

We can create your mapping outputs for you, such as ENC's, based on your specific needs as and when you need them. Talk to us today on +44 (0)1420 768 262.

Or see more details, including case studies on our website [www.oceanwise.eu](http://www.oceanwise.eu).

See our case study on the ENC writer on our website at:  
[www.oceanwise.eu/software/maritime-toolbar/enc/](http://www.oceanwise.eu/software/maritime-toolbar/enc/)

## The ENC production process

