

## MetOcean Drymate Connector Range

The **MetOcean** metal shell connector series has a long established pedigree in deep ocean and harsh environment applications.

The design utilises industry standard MIL spec. inserts incorporated into rugged metal shells to withstand the extreme conditions during handling, deployment and service.

The modular design offers great versatility with multiple options for electrical performance, size, pin configuration and material specification.

Rated to 7,100m, these connectors can be supplied Oil filled, moulded in Polyurethane or Polyethylene or unterminated for field installation.



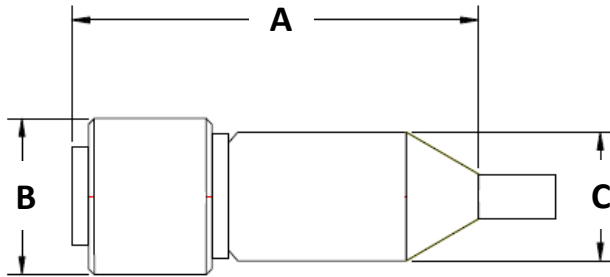
### Key Features and Benefits

- 9 shell sizes, 2 to 61 contacts, 8 to 20AWG
- MIL-DTL-26482 Specification inserts, up to 5 keyway variants
- Available in 316 Stainless Steel as standard, titanium, aluminium, naval brass, non-metallic or other options available on request
- Voltage rated from 700Vdc to 1500Vdc, current from 7.5A to 45A (single pin)
- Standard and reverse gender configurations for connectors or bulkheads
- COTS inserts and in-house manufactured housings for cost effective, short lead time supply
- Proven sealing design accommodates non-standard inserts – Fibre Optic, RF/Coax, hybrid etc.
- Options include electrical screening, strain member termination, fully waterblocked, oil filled
- Bulkhead mounting variants and conductor tails to suit individual requirements
- Right angled and multiway breakout moulding options

### Standard Specifications :-

Temperature :	-20 °C to 100°C	Body :	Stainless 316L
Contact IR :	>999MΩ @ 1,000Vdc	Insert :	Polychloroprene / Plated Aluminium
Mated Depth :	7,100m	Contacts :	Copper Alloy / Gold over Nickel Plate
Locking Nut :	Acetal or Brass	O Rings :	Nitrile N170

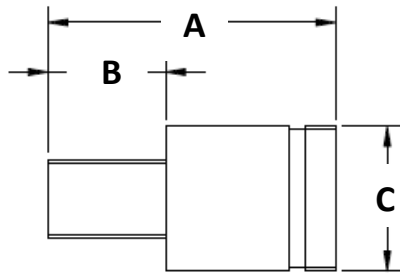
**Moulded MetOcean Connector Plug Dimensions**



SIZE	'A'	'B'	'C'
8	91	33	31
10	91	35	29
12	91	38	37
14	91	42	42
16	91	48	47
18	110	50	49
20	120	53	52
22	135	56	55
24	145	60	59



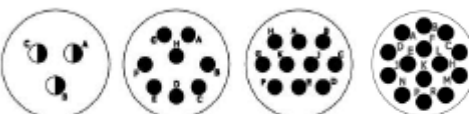
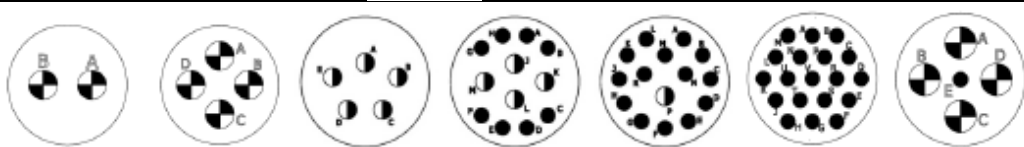
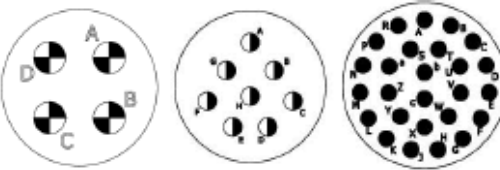
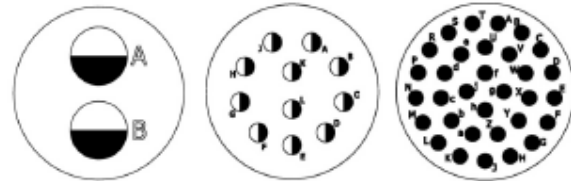
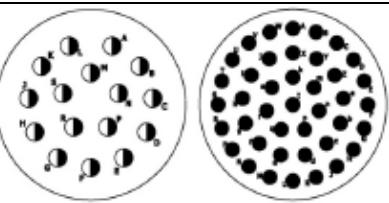
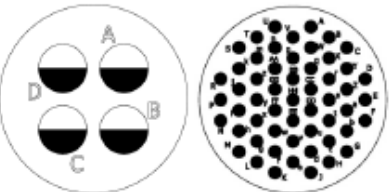
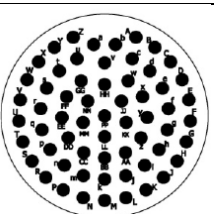
All dimensions in mm (Approx)

**Standard MetOcean Bulkhead Receptacle Dimensions**



SIZE	'A'	'B' THREAD	'B'	'C'
8	60	½" -20 UNF	24	27
10	60	5/8" -18 UNF	24	30
12	60	¾" -18 UNF	24	33
14	60	7/8" -14 UNF	24	37
16	60	1" -12 UNF	24	43
18	60	1 1/8" -12 UNF	24	46
20	62	1 1/4" -12 UNF	24	50
22	64	1 3/8" -12 UNF	24	53
24	63	1.5" -12 UNF	24	55

All dimensions in mm (except where stated)

SIZE	METOCEAN CONNECTOR CONTACT ARRANGEMENT (FACE VIEW)
8	
10	
12	
14	
16	
18	
20	
22	
24	

● = size 20 contacts (voltage rating at sea level = 700V)    ◐ = size 16 contacts (voltage rating at sea level = 1200V)  
 ◑ = size 12 contacts (voltage rating at sea level = 1500V)    ◒ = size 8 contacts (voltage rating at sea level = 1500V)

STSubsea products are being used in a wide variety of marine and harsh environments, including :-

- Subsea instrumentation, sensors, and control systems
- Autonomous and remotely operated surface and underwater vehicles.
- Downhole instrumentation and logging systems
- Military Communication and Control systems
- Meteorological Buoy systems
- Military Sonar systems
- Land and Marine Seismic equipment
- Offshore renewable energy projects

These products are derived from a range of key strengths, capabilities and industry experience :-

- Specialised, bespoke connectors and cables for underwater or harsh environments.
- Complete prototyping service, from design to manufacture to electrical and pressure testing
- Design of electrical, optical, coax /RF, Ethernet or hybrid connectors from unique one-offs to volume applications
- Cost effective, shallow water products
- Incorporating proven, commercially available interconnects into subsea capable solutions
- On-site moulding service and an over-moulding material capability for Polyurethane, Neoprene and Polyethylene components
- Through-hull penetrators, glass-to-metal seals and epoxy waterblocks
- Ceramic transducers and hydrophones
- Potting and encapsulation of switches, sensors, strain gauges and PCBs
- Long established, MetOcean range of metal shell, drymate connectors

STSubsea is a division of STS Defence, an SME providing electronic manufacturing and through-life system engineering services; engaging with our customers through experience, expertise and a commitment to quality.

STS Defence is part of the Key Technologies group, along with STS Rail, manufacturer of railway telephone concentrators and Foxton, supplier of audio visual equipment for modern security and policing applications.

We focus on working in partnership with customers developing initial concepts into reality, leveraging over 40 years' experience of working on Ministry of Defence projects to develop an impressive portfolio of through-life capabilities that are essential to our clients.