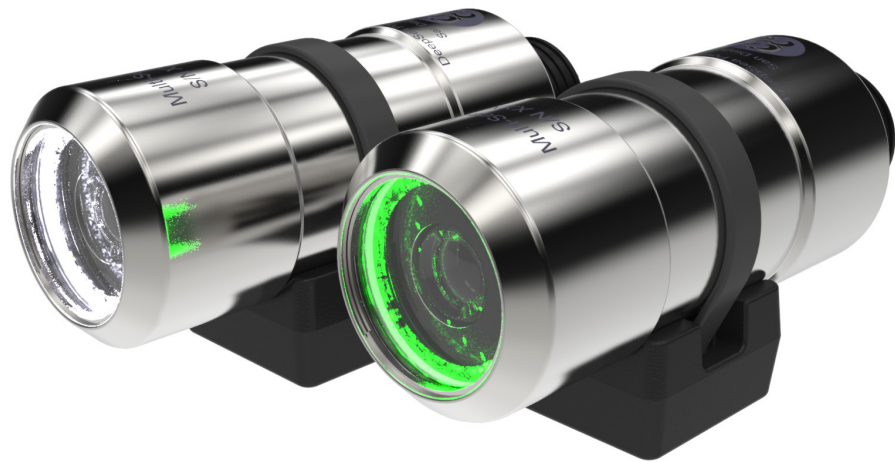


DEEPPSEA
Power & Light®



LED Multi SeaCam®

The Multi-Purpose, Versatile Camera with Built-in LEDs.



FEATURES

Color, Black & White, or Low-Light Black & White

Titanium Housing Depth Rated to 4,000 m

Scratch-Resistant Sapphire Port

Interchangeable Camera Modules

Compact Rugged Design

Integrated Variable LED Illumination

T: (858) 576-1261
F: (858) 576-0219

4033 Ruffin Road
San Diego, CA
92123- 1817 USA

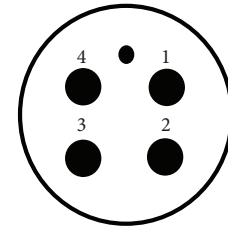
www.deepsea.com
sales@deepsea.com



LED Multi SeaCam®

	LEDMSC-1055	LEDMSC-1065	LEDMSC-2065
Mechanical Specifications			
Housing	Titanium		
Port	Sapphire		
Outer Diameter	47.4 mm [1.86 in.]		
Overall Length (w/o connector)	106.5 mm [4.19 in.]		
Weight in Air	459 g [16 oz.]		
Weight in Water	112 g [4 oz.]		
Environmental Specifications			
Depth Rating	4,000 m		
Operating Temp.	20° C to 40° C [-4° F to 104° F]	-10° C to 40° C [14° F to 104° F]	-30° C to 40° C [-22° F to 104° F]
Optical Specifications			
Lens	2.8 mm, f/2.8	5 mm, f/2.8	3.0 mm, f/2.0
Focus	Fixed focus, wide angle	Fixed focus	Fixed focus, wide angle
Depth of Field	10 cm [4 in.] to infinity	30 cm [12 in.] to infinity	10 cm [4 in.] to infinity
FOV in Air	106° H x 78° V x 149° D	77° H x 56° V x 98° D	95° H x 75° V x 130° D
FOV in Water	77° H x 59° V x 98° D	57° H x 45° V x 71° D	75° H x 60° V x 85° D
Video Specifications			
Image Sensor	1/3 inch CCD image sensor	1/2 inch CCD image sensor	1/3 inch CCD image sensor
Number of Pixels	537 H x 505 V (EIA)	811 H x 508 V (EIA); 795 H x 596 V (CCIR)	768 H x 494 V (NTSC); 752 H x 582 V (PAL)
Resolution	400+ TV lines horizontal	570 TV lines horizontal	460 TV lines horizontal
Scene Illumination	0.27 Lux at f2.8	0.01 Lux at f2.8	1.1 Lux at f2.0
Signal to Noise	More than 45 dB	46 dB	More than 45 dB
Video Output	1.0 volt peak-to-peak into 75 ohm		
Video Format	EIA (RS170)	EIA (RS170) or CCIR	NTSC or PAL
Electrical Specifications			
Power	11~30 VDC Below 14 VDC, the LED output maybe diminished.	11~30 VDC Below 14 VDC, the LED output maybe diminished.	11~30 VDC Below 14 VDC, the LED output maybe diminished.
Current	Camera 110 mA LED's 0~250 mA Total max 360 mA	Camera 160 mA LED's 0~250 mA Total max 410 mA	Camera 200 mA LED's 0~250 mA Total max 450 mA
LED Color Ring	Green	Green	White

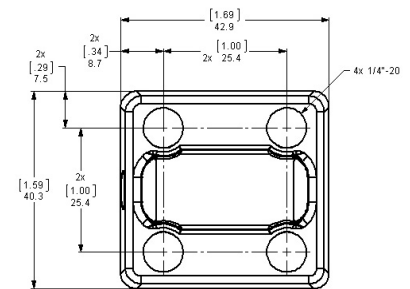
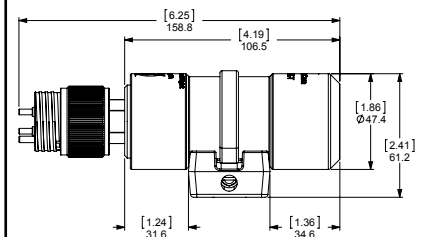
Standard Connector



BH4MP
 1 = Ground
 2 = Power
 3 = Video
 4 = Not Used

*Other connectors and pin-out options are available upon request.

Dimensions



[inch]
mm



4033 Ruffin Road
 San Diego, CA
 92123-1817 USA

T: (858) 576-1261
 F: (858) 576-0219

www.deepsea.com
 sales@deepsea.com

