

Base•X₂ presents the best profiler technology of today in a compact form.

Retaining the convenient size of its predecessor, Base•X₂ offers embedded WiFi connectivity and GPS cast geo-referencing. Data is automatically downloaded and processed into desired manufacturer formats, saving valuable time for the operator. With new combined conductivity and temperature sensor, CT•Xchange, Base•X₂ converts from an SVP to a CTD profiler with the switch of a single sensor head.

Known as a 100m profiler ideal for the shallowest of surveys, this latest generation of Base•X is also available rated to 500m.

Surveying beyond 500m?

When venturing past 500m, the ideal profiler for hydrographic survey is **Minos•X**.

Our most popular profiler is known for its rugged performance and ease of use. Traditionally configured for SVPT or CTD, new CT•Xchange and P2S1 option allow CTDSV for ultimate data security.

Minos•X in acetal is rated to 1000m. For profiling at greater depths or in particularly harsh environments, the all-titanium Minos•X rated to 6000m is up for the challenge.



Minos•X

Base•X₂

NEW!

| Name & Product Code | Max No. of Sensors | Size (dia. x length, mm) | Communications | Input Voltage (v) | Materials | Max Depth (m) | Weight in Air (kg) | Weight in Water (kg) |
|---|--------------------|--------------------------|----------------------|-------------------|-----------|---------------|--------------------|----------------------|
| BASE•X₂ PDC-BSX2-P1S1-01 | 2 | 69 x 390 | WiFi, RS-232, RS-485 | 8-26 | Acetal | 100 | 1.17 | 0.49 |
| BASE•X₂ PDC-BSX2-P1S1-05 | | | | | | 500 | | |
| MINOS•X PDC-MNX-P1S2-10 PDC-MNX-P12S1-10 | 3 | 76 x 565 | RS-232, RS-485, WiFi | 8-26 | Acetal | 1000 | 2.22 | 0.70 |
| MINOS•X PDC-MNX-P1S2-60 PDC-MNX-P2S1-60 | 3 | | | | Titanium | 6000 | 4.63 | 3.11 |

| | Product Code | Max. Depth (m) | Range | Precision (+/-) | Accuracy (+/-) | Resolution | Response Time |
|--------------------|------------------------------|----------------|---|-----------------------------------|----------------------------------|----------------------------------|---------------------------|
| SV•Xchange™ | XCH-SV-STD | 6000 | 1375-1625 m/s | 0.006 m/s | 0.025 m/s | 0.001 m/s | 47 μs |
| P•Xchange™ | XCH-PRS-0050 to XCH-PRS-6000 | As per range | 50, 100, 200, 500, 1000, 2000, 4000, 5000, 6000 | 0.03% FS | 0.05% FS | 0.02% FS | 10 ms |
| CT•Xchange™ | XCH-CT-RA-090-n545 | 6000 | CND: 0-90 mS/cm TMP: -5-45°C | CND: 0.003 mS/cm TMP: 0.003 °C | CND: 0.01 mS/cm TMP: 0.005 °C | CND: 0.01 mS/cm TMP: 0.005 °C | CND: 25 ms TMP: 100 ms |



Want WiFi on your profiler? All X•Series profilers are compatible with Data•Xchange, the WiFi & embedded GPS device saving time for hydrographers around the world by transferring and exporting data wirelessly and automatically.

- WiFi Range: >20m
- GPS Accuracy: <5m
- Current Draw: 70 mA
- Current Draw in Water: 50 mA
- Speed: up to 300 kB/s
- Maximum Depth: 1000m

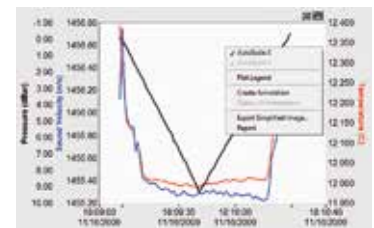
Micro•X is a real-time, single parameter instrument. Designed primarily for MBES, hull mounted applications, and vehicle integration, this SV probe in miniature pairs with Base•X or Minos•X to provide a total SV package.

Common cable lengths available with standard, Teledyne RESON, R2Sonic, and Kongsberg connectors. Custom configurations are available on request.



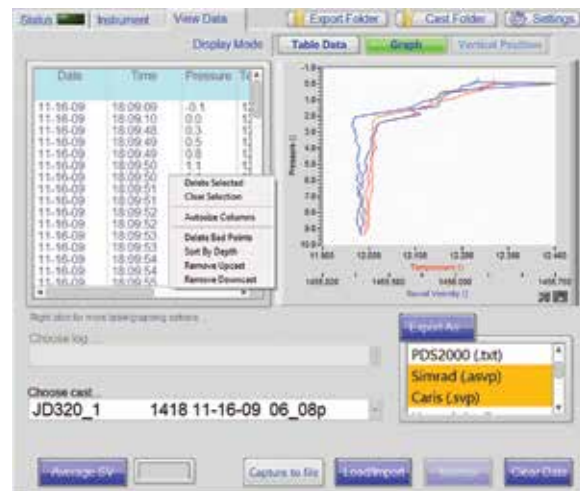
| Name & Product Code | Size, mm (dia. x length) | Communications | Input Voltage (v) | Materials | Max Depth (m) | Weight in Air (kg) | Weight in Water (kg) |
|--------------------------------|--------------------------|----------------|-------------------|-----------|---------------|--------------------|----------------------|
| MICRO•X PDC-MIX-P1S0-60 | 33 x 240 | RS-232, RS-485 | 8-26 | Titanium | 6000 | 0.39 | 0.25 |

| | Product Code | Max. Depth (m) | Range | Precision | Accuracy | Resolution | Response Time |
|--------------------|--------------|----------------|---------------|-----------|-----------|------------|---------------|
| SV•Xchange™ | XCH-SV-STD | 6000 | 1375-1625 m/s | 0.006 m/s | 0.025 m/s | 0.001 m/s | 47 μs |



SeaCast provides an intuitive interface with X•Series instrumentation, offering easy instrument setup, data collection and management, and exporting tools.

- Automated connection and workflow via wireless or cable
- Instrument and sensor details displayed
- Calibration certificates printed on demand
- Automatic or manual data filtering
- Offline access to existing casts for post-processing
- Show live data on multiple graphs concurrently
- Graph editing and annotation for export
- Automated data export functionality
- Simultaneous export to multiple data formats, including
 - Hypack
 - Quinsy
 - Kongsberg
 - Sonardyne
 - PDS 2000
 - CARIS
 - CARIS (concatenated)
 - HIPAP
 - CSV
 - Custom



T: +1-250-656-0771

E: sales@AMLoceanographic.com

T: +1-800-663-8721 (NA)

W: www.AMLoceanographic.com

F: +1-250-655-3655