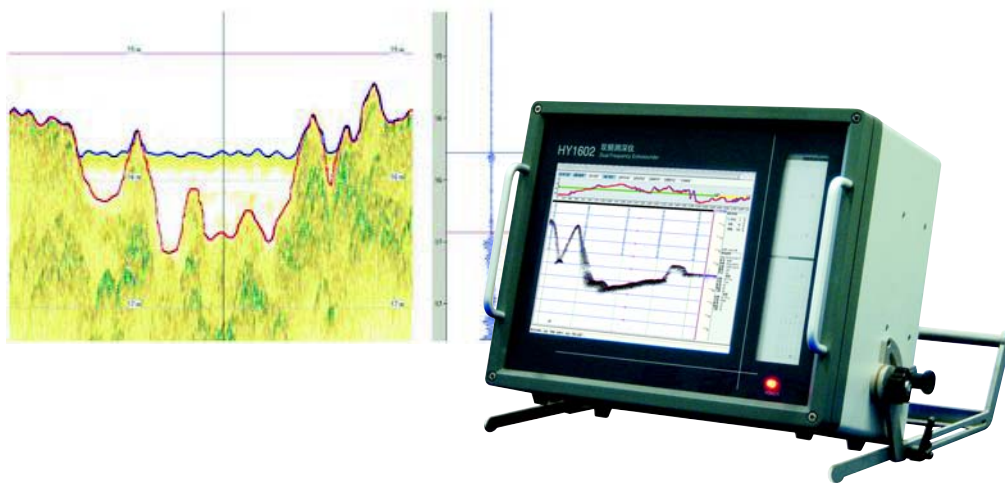


HY1602

全数字一体化双频测深仪

Dual Frequency Echo Sounder System



- 双频双通道工作，双通道水深数据叠层显示
- 同时输出电子图像和热敏记录结果
- 嵌入式工控系统、可接分显示器
- TVG/AVG 动态增益调节，增强干扰能力
- 低噪声接收 / 空间滤波，时间滤波调节
- 高速USB 总线接口 / 大容量数据库 /
- 测深图像实时输出、显示、存储、回放和实时热敏打印
- 多串口通讯 / 可接 GPS、涌浪补偿器等外设
- 直流交流供电模式
- Dual Frequency and Double channel
- Output both echogram and thermal chart paper result simultaneously
- Based on the computer platform and have a slave display
- TVG/AVG dynamic adjustment, reinforced anti-jamming ability
- Low noise receiving ability and space filter, Time filter adjustment
- High speed USB interface, huge storage capacity
- Echogram output for real time display, storage, playback and printing
- Multi-ports communication for GPS, motion sensors and so on
- Bundled data acquisition software like HYPACK, EIVA.
- AC/DC Power supply

HY1602全数字一体化双频测深仪融计算机技术、数字信号处理与计算机图形成像技术于一体，采用一体式嵌入式系统结构，内置嵌入式工控系统、实时热敏打印平台，实现了测深仪与计算机平台的完美结合，高度体现了测深仪操作与控制的数字智能化。整套系统全部采用测深软件自动控制测深，智能动态信号检测、识别和锁定跟踪，实时监测和控制测深全过程，保证了测深系统的高等级测深精度和可靠性。测深数据和图像实时显示、存储、同步打印图像，同时通过系统内部的数据传输到测量软件，并利用计算机系统的分显示技术将图像同步传输到操控台，实现测深与导航的双重功能。该数字测深系统的一体化内置计算机系统的便携式测量模式，充分利用计算机资源，实现全面数字化测深应用，是目前国产最为先进和可靠的全数字测深系统，适用于江河、港航和海岸带等各种复杂水况下的水深测量工程。

HY1602 Dual Frequency Echo Sounder System, with DSP and digital imaging technology, embedded industrial control system and data acquisition software, is an all-in-one PC based dual frequency echo sounder, which can output both echogram and thermal chart paper result simultaneously. Its main features as follows: Standard computer for easy operation interface and data storage, advanced bottom digitizer, internal large storage of data to file with time reference, digitized depth, position heave and annotations. It is a perfect choice for surveying in the river, lake, ocean and so on.

技术参数

Specifications

技术性能

工作频率：高频 208KHz-8度
" 低频 24kHz-20度
测深范围：高频 0.5~300m
" 低频 1~2000m
输出功率：高频 200W
" 低频 500W
精度： 高频 1cm ± 0.1%所测深度
" 低频 10cm ± 0.1%所测深度
软件功能：声图显示、内外部定标、
串口输入输出数据、参数设置
外部接口：2个RS232, 4个USB2.0, 1个VGA, 1个LAN
工作电源：24VDC 或 220VAC
功耗： 100W
记录方式：大容量电子盘储存及热敏打印记录

整机配置

主机
尺寸： 400 × 200 × 310mm
重量： 17.5kg
换能器
重量： 20kg
电缆长度：15m（可按要求增加长度）
测量杆
尺寸： 3节 × 1.5m
重量： 13kg

Specifications

Frequency: 208KHZ/24KHZ
Transducers Beam: High Fre. 208KHZ, <= 8 degrees
Low Fre. 24KHZ, <= 20degrees
Depth range for Hi Fre.: 0.5m-300m @ 208KHZ
Depth range for Low Fre.: 1m-2000m @ 24KHZ
Output power: 200W @ 208KHZ
500W @ 24KHZ
Accuracy: 0.01m ± 0.1% @ 208K
0.10m ± 0.1% @ 24K
Software: Echogram display, event mark both internally and externally,
Output/input data via serial ports, parameter setting-up
Interface: 2 RS232, 4 USB2.0, 1VGA and 1 LAN for communication
Power Supply: 22-31V DC or 180-260V AC
Power Consumption: 100W
Recording: Echogram Large capability hard disk storage
and Thermal chart paper recording

Composition

MAIN UNIT
Dimensions: 400 × 200 × 310mm
Weight: 17.5kg
TRANSDUCER
Weight: 20kg
Cable Length: 15m (adjustable)
SUPPORTING TUBE
Dimensions: 3 × 1.5m
Weight: 13kg



无锡海鹰加科海洋技术有限公司

地址：江苏省无锡市梁溪路18号 邮编：214061

电话：0510-88669692/93/94/95/96 传真：0510-88669700

E-mail: sales@haiyingmarine.com http://www.haiyingmarine.com

Wuxi Haiying-Cal Tec Marine Technology Co., Ltd.

Add: No. 18 Liangxi Road, Wuxi, Jiangsu Province, China 214061

Tel: 0086-510-88669692/93/94/95/96 Fax: 0086-510-88669700

E-mail: sales@haiyingmarine.com http://www.haiyingmarine.com