

# DIGITAL SCIENTIFIC ECHOSOUNDERS

BioSonics, Inc. – World Leader in Digital Scientific Echosounder Technologies

## MX ECHOSOUNDER

## AQUATIC HABITAT ASSESSMENT AND MAPPING

Assessment of Submersed Aquatic Vegetation (SAV)  
Substrate Classification – delineate sand, mud, rock  
Bathymetric Mapping

### Performance Features

- Portable, weatherproof, and rugged with storage for cables and transducer
- Precision instrument, calibrated and highly accurate
- Complete with software for data acquisition, processing and visualization
- **GENERATE MAPS INSTANTLY**
- Integrated DGPS sensor to geo-reference data
- High resolution, full color echogram

### Specifications

- Transmit Power: 105 Watts RMS
- Input power: 12-18 VDC or 110/240 VAC
- Transmit source level: 213 dB re 1uPa
- Pulse length: 0.4ms
- Ping rate 5Hz
- Range resolution: 1.7cm
- Accuracy: 1.7cm +/- 0.2% of depth
- Depth range: 0-100m
- Operating conditions: 0-50 °C
- DGPS positional accuracy: <3m, 95% typical
- DGPS velocity accuracy: 0.1 knot rms
- DGPS update rate: 1sec



Intro  
Price

**\$9,985**

### Dimensions

- Echosounder Unit: 37cm x 26cm x 15cm (14.6" x 10.2"x 6"), Wt. 5.4 kg (12lbs)
- Transducer: 8.4cm L x 4.3cm diam (3.3"x1.7") 1.36 kg (3lb), Stem threads 1/2" - NPS

### Transducer

- Single frequency - 200 kHz
- Beam angle – 8.5 degree conical
- Low side lobes to -18 dB
- Heavy duty stainless steel housing

### Interfaces

- 1 x Ethernet (system control)
- 2 x RS232 (GPS in/out)
- 1 x BNC (external trigger)



Seattle, Washington, USA • 206.782.2211 • www.biosonicsinc.com

BioSonics, an authorized reseller of the



# MX Series Technical Specifications and Features

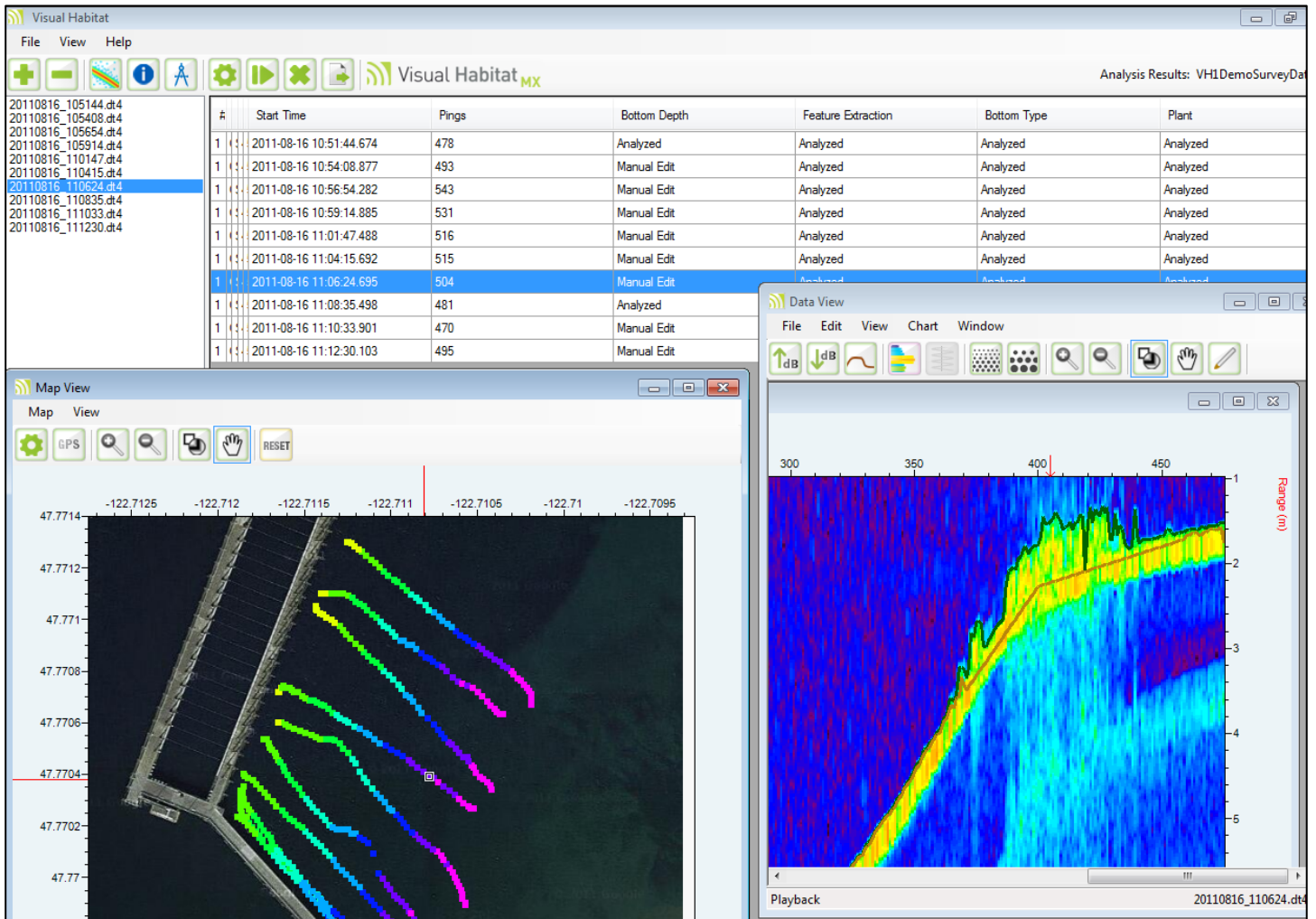
## Data Analysis Software Features

**Visual Habitat** - A complete analysis package that provides processing for:

- SAV – canopy height, % cover, biomass
- Bathymetry – produce highly accurate maps and depth charts
- Substrate classification – delineate areas of rock, sand, mud

Export results as CSV or KML files

Quickly generate Google Maps showing transect lines with bathymetry, bottom type, and vegetation presence



Seattle, Washington, USA • 206.782.2211 • www.biosonicsinc.com

BioSonics, an authorized reseller of the

