

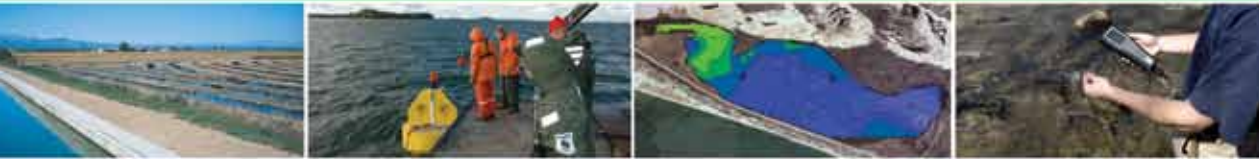


water monitoring solutions



Aquaculture
Coasts & Estuaries
Groundwater
Lakes & Ponds
Oceans
Ports & Harbors
Reservoirs
Rivers & Streams
Wastewater
Wetlands

Pure
Data for a
Healthy
Planet.®



“Never doubt that a small group of thoughtful, committed citizens can change the world.”

Margaret Mead

Water is our planet’s most precious natural resource. And we must be diligent in measuring and protecting it.

YSI and its divisions take great pride in designing, building, and servicing the high-precision instruments that help you collect accurate and reliable water quality and velocity data.

Our instruments and accessories are field-proven for applications such as:

- Aquaculture**
- Coasts & Estuaries**
- Groundwater**
- Lakes & Ponds**
- Oceans**
- Ports & Harbors**
- Reservoirs**
- Rivers & Streams**
- Wastewater**
- Wetlands**



Why YSI?

For 60 years, YSI has pioneered the development of high-quality instrumentation for use in natural waters.

Our technology saves you time:

Meeting the global need for improved environmental monitoring requires fewer technical personnel and a lower cost of ownership. YSI provides accurate sampling and turn-key monitoring solutions, equipment that is easy to use and install, and intuitive interfaces.

Our reliability improves efficiency:

Successful monitoring efforts depend on accurate and defensible data. We deliver reliable instruments and continuously develop safeguards and system checks to ensure you obtain the highest-quality data as quickly as possible.

Our employees understand your challenges: Our staff has extensive field experience which helps them provide viable solutions and hands-on support for your monitoring challenges.

Our customers can reach us: We have 17 global offices on 5 continents.

Contents

Handheld Instruments.....	4
Sampling & Testing Instruments ..	5
Multiparameter Sondes	6-7
Profiling.....	8
Velocity & Current Meters	9-11
Buoys & Integrated Systems .	12-13
Services	14
Hydrological Monitoring.....	15



Quick Links

ysi.com/proplus

ysi.com/proODO

ysi.com/proOBOD

ysi.com/pro20

ysi.com/pro2030

Professional Series Handheld Instruments

for water quality sampling

YSI's Professional Series is a rugged line of instruments designed based on user feedback. You told us what you wanted, we listened – giving you instruments to lower your overall cost of ownership.

Applications

Groundwater
Wastewater
Aquaculture
Surface water

Parameters

Temperature
Dissolved oxygen
pH
ORP
Conductivity
Specific conductance
Salinity
Total dissolved solids
Resistivity
Barometric pressure
Ammonium/ammonia
Nitrate
Chloride



ProPlus

- Measures any combination of dissolved oxygen, pH, conductivity, ORP, ammonium, nitrate, chloride, salinity, total dissolved solids, barometric pressure, and resistivity
- Interval or single-event logging with 5,000 data set memory and 100 site list and file folder capabilities; GLP conforming data
- Features on-screen help, backlit display and keypad, user-replaceable cables and sensors, and auto-buffer recognition



ProODO® Digital Series

- Non-consumptive optical DO luminescent method eliminates the need for stirring
- Expanded DO range of 0-500%
- Field-rugged user-replaceable cables in lengths up to 100 meters
- Digital technology stores cal data in the sensor so you can place it on any ProODO instrument

ProOBOD™ Probe

- Self-stirring optical BOD probe
- Two-year warranty
- No warm-up required
- Extremely quiet operation

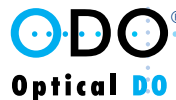


Pro20

- Choose between polarographic or galvanic DO sensors
- Interchangeable probes and cables reduce down-time
- Measures dissolved oxygen and temperature in lab and field
- Industry's quickest DO response saves you time
- One Touch Cal feature calibrates within seconds

Pro2030

- Choose between polarographic or galvanic DO sensors
- Interchangeable probes and cables reduce down-time
- Measures dissolved oxygen, conductivity, salinity, TDS, and temperature
- Automatically compensates DO for changes in salinity



Pro Series Accessories

- Soft- and hard-sided carrying cases
- Flow cells
- Flow cell mounting spike
- Belt clip
- Tripod clamp
- Probe weights
- Cable management kit

Data Manager Desktop Software

- Easy-to-use software to manage all data, set up instruments, or conduct real-time studies
- View graphical and tabular data
- USB connection powers the instrument

800 897 4151 US
+1 937 767 7241



Quick Links

ysi.com/levelscout ysiecosense.com
ysi.com/photometers ysi.com/laboratory
ysi.com/556

Sampling and Testing Instruments



levelscout

Level Scout®

- Stainless steel or titanium housing easily fits down 1" wells
- Measure vented gauge or absolute level and temperature
- Up to 288,000 data set memory accessible with Data Scout software
- Convenient user-replaceable batteries allows it to be left unattended for extended periods
- In-line vent filter has no desiccant to replace. It is maintenance-free, allowing for worry-free deployments

9500 Photometer

- 100+ tests, including hardness, ammonia, calcium, nitrate, pH, copper, and more
- Simple, on-screen instructions
- Non-hazardous reagents with long shelf life
- 500 sample set memory and waterproof USB



556 Multiparameter

- Simultaneously displays dissolved oxygen, pH, conductivity, temperature, ORP, salinity, and TDS
- Stores 49,000 data sets with interval or event logging
- Choose 4-, 10-, and 20-meter cable lengths
- Optional flow cell and barometer



5100 DO Meter

- Built-in barometer for pressure compensated calibration
- Programmable auto-stabilization
- Integrity function indicates membrane damage
- Built-in OUR/SOUR software
- Stores 100 data sets

Applications

Groundwater
 Wastewater
 Aquaculture
 Surface water
 Industrial

Parameters

Temperature
 Dissolved oxygen
 pH
 ORP
 Conductivity
 Level
 Specific conductance
 Salinity
 Total dissolved solids
 Resistivity
 Barometric pressure
 Ammonia
 Hardness
 Chlorine
 Iron
 Alkalinity and more



5010 Self-Stirring BOD Probe

- Continuous stirring for accurate measurement
- Fits standard 300-mL BOD bottles; adapters for additional BOD bottles
- Connects directly to the 5000 and 5100 meters

800 897 4151 US
+1 937 767 7241

Multiparameter Sondes

for monitoring, sampling & logging

YSI 600 multiparameter sondes are designed for applications where a fewer number of parameters is required and size and price are of primary concern.

Applications

Short-term studies
Lake and stream sampling
Groundwater wells
Tide gauge measurements
Water level

Parameters

Conductivity
Temperature
Depth
Vented level
pH
ORP
Dissolved oxygen

800 897 4151 US
+1 937 767 7241



600LS sonde

- Designed for spot sampling level measurements and tide gauge measurements

600R

- Conductivity and temperature sensors and options to add pH and Rapid Pulse™ dissolved oxygen
- Ideal for large monitoring programs and educational applications

600QS "Quick Sample" system

- Includes a 600R, 650 display logger, and field cable
- Additional sensor options such as ORP and vented level



600XL and 600XLM sondes

- Ideal for water level monitoring, ground water and surface water monitoring
- Includes DO, temperature, and conductivity sensors and options to add pH or pH/ORP, depth, and vented level
- XLM has batteries for unattended, *in situ* monitoring

650MDS (Multiparameter Display System)

- Connects to any 6-Series multiparameter instrument
- Easily log real-time data, calibrate, and set up sondes for deployment
- Upload data to a PC
- Optional barometer and GPS interface



600XL / 600XLM V2 sondes

- Ideal for water level monitoring, ground water and surface water monitoring
- Includes DO, temperature, and conductivity sensors and options to add pH or pH/ORP, depth, and vented level
- Includes one optical sensor port for dissolved oxygen, blue-green algae, chlorophyll, rhodamine, or turbidity
- XLM has batteries for unattended, *in situ* monitoring



Sonde Accessories

- Soft- and hard-sided carrying cases
- Flow cells
- Sonde weights
- Field cables
- Calibration solutions



Quick Links
ysi.com/v2

Multiparameter Sondes

for long-term monitoring

YSI's 6-Series family includes versatile, multiparameter sondes designed for real-time environmental monitoring and extended deployment.



Applications

Unattended monitoring
Source water
Lake profiling
Dredging
Underway sampling
PAR studies
Algal bloom monitoring

Parameters

Conductivity
Temperature
Dissolved oxygen
Chlorophyll
Blue-green algae
Turbidity
Rhodamine
Depth
Vented level
pH
ORP
Nitrate
Ammonium
Chloride
PAR

6600 V2 sonde

- Largest sensor payload capability and longest battery life
- Choose between 2 and 4 optical ports for dissolved oxygen, blue-green algae, chlorophyll, rhodamine, and turbidity
- 6600 V2 and 6600EDS V2 are also available with a pH wiping system

6920 V2 sonde

- Economical, 15-parameter logging system
- Battery powered for long-term, *in situ* monitoring and profiling
- Choose between 1 and 2 optical ports

6820 V2 sonde

- Cost-effective sampling system with up to 15-parameter reporting capability
- Ideal for profiling and spot-checking
- Choose between 1 and 2 optical ports

600OMS V2 sonde

- Smallest V2 sonde
- Perfect for applications such as turbidity or oxygen monitoring
- Accepts 1 optical sensor as well as conductivity, temperature, and depth



Anti-Fouling Kits

- Copper-alloy components prevent the growth of biofouling
- Extends deployment periods by at least 3x
- Reduces your trips to the field for maintenance

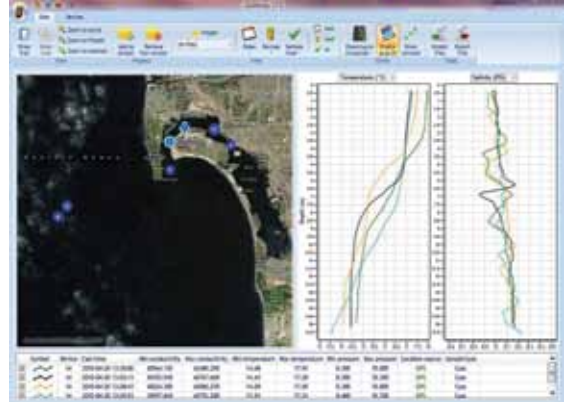
800 897 4151 US
+1 937 767 7241



Quick Links
ysi.com/castaway

Profiling

YSI's newest instrument is a small, lightweight, simple-to-deploy CTD that provides data in minutes.



Applications

- Sound velocity profiles
- Saltwater intrusion
- Hydrographic surveying
- Coastal research
- Fisheries
- Field sensor verification

Parameters

- Conductivity
- Temperature
- Depth
- Salinity
- Sound speed

CastAway® Castable CTD

- Instantaneous profiles of temperature, salinity, and sound speed
- Fast sampling and sensor response
- Easily review data on built-in LCD
- Built-in GPS records position, date, and time
- Measures down to 100 meters
- Bluetooth wireless communication

800 897 4151 US
+1 937 767 7241



Quick Links
sontek.com/oceanography.html
sontek.com/laboratory.html

Velocity and Current Meters

SonTek products include high-resolution, single-point acoustic Doppler velocimeters, profilers, and current meters. These systems measure water currents, waves, tides, and fluid dynamic parameters in oceans, laboratories, and along coasts.

Applications

Bottom boundary
Currents
Discharge
Tide level
Flow/low flow
Sediment transport
Flumes
Near-shore monitoring
Waves



ADPs (Acoustic Doppler Profilers)

- Rugged, multi-purpose current profilers
- Configurations for real-time monitoring and autonomous deployment
- Profiling ranges up to 200 meters
- Options include bottom tracking, directional waves, and integrated external sensors



Argonaut®-XR

- Affordable and easy-to-use current profiler
- Automatically adjusts sampling volume with changing tide level or river stage
- Bottom-mounted for near-shore deployments
- Wave height and spectra



ADVOcean

- Rugged ADV for hostile environments such as surf zone
- 3-dimensional velocity measurement
- Hydra version for autonomous deployment includes compass/tilt sensor, pressure sensor, and optional external sensors



MicroADV

- Three-axis velocity measurement for hydraulics research in labs
- Sampling rates up to 50 Hz; sampling volume 0.09 cc
- Excellent for low-flow and turbulence studies

Velocity and Current Meters

SonTek/YSI products include acoustic Doppler profilers and other systems for measuring water velocity and flow in surface water applications such as rivers, lakes, and canals.

Applications

Discharge calculation
Stream indexing
Real-time flow
Irrigation
Wastewater effluent



Argonaut®-ADV

- Single-point, shallow-water flow monitoring
- Rugged ADV head and internal battery pack for autonomous deployment
- Ideal for streams, marshes, lakes, and water treatment facilities



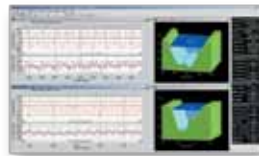
Argonaut®-SL

- 2D, side-looking velocity, level, and flow meter
- Calculates flow/discharge via theoretical or index-velocity ratings
- Installs on side of river or open channel for easy access and quick maintenance
- Measures remotely, avoiding flow interference from piers or pilings



Argonaut®-SW

- Up-looking velocity, level, and flow meter for shallow water: 1 to 16 ft (0.3 to 5 m) deep
- Automatically accounts for stratified velocity found in reversing or complex flow conditions
- Mounted on bottom of channel, stream, or pipe
- Optional outputs: SDI-12, Modbus, analog (current or voltage), and RS-422



ViewArgonaut Software

- Data post-processing and real-time evaluation
- Works with all SonTek Argonauts



Velocity and Current Meters



Argonaut®-MD

- Oceanographic single-point current meter for deployments up to one year
- Clamps directly to mooring line or use cage
- Standard compass/tilt and temperature sensors, and optional pressure and conductivity sensors



RiverSurveyor

- Accurately measures discharge from moving boats
- Computes complete 3-D velocity profile and bathymetric channel cross-section in minutes
- Optional tethered platform for measurements from bridges
- Features multi-frequency velocity beams for robust bottom tracking and vertical beam for precise bathymetric surveying
- Internal DGPS with RTK option
- Embedded echosounder



FlowTracker Handheld ADV

- Wading discharge or velocity measurements in streams, weirs, flumes, and open channels
- Easily attaches to top-setting wading rod
- SmartQC for instant feedback on data quality
- Supports multiple river discharge methods and current velocity measurements
- Output data directly into FlowPack
- Multi-language



Triton-ADV

- Measures currents, directional waves, and tides
- High-accuracy, single-point current meter with AutoVelocity technology
- Integrated pressure, temperature, and compass/tilt sensors in a compact, lightweight package

Applications

- Discharge calculation
- Stream indexing
- Real-time flow
- Irrigation



FlowPack Software

- Store flow, velocity, and stage measurements in one software
- Generate velocity-index ratings and comprehensive reports



Integrated Systems

YSI's Integrated Systems & Services division provides natural-resource monitoring solutions, ranging from single buoys to large-scale, real-time monitoring networks.

Applications

Baseline studies
Dredging
Emergency response
Fisheries
Non-point source/TMDL
Point source/discharge
Stormwater & CSO
Source water
Lakes
Estuaries
Bays
Continental shelf

Parameters

Water quality
MET
Currents
Nutrients
PAR
Hydrocarbons



Environmental Monitoring Modules

- **Coastal Buoys** for high energy environments and large sensor payloads
- Proven design deployed around the world
- Standard wave, current, and water quality solution without customization
- In-house design and manufacturing for solutions with alternative telemetry, prototype instruments, larger hulls, and custom software solutions
- Engineered with oceanographic-grade materials
- **Inland Buoys** for lakes and rivers
- Can be deployed by several people in small watercraft
- Designed for years of reliable operation
- Tamper- and vandal-resistant for public areas
- Batteries situated to lower center of gravity

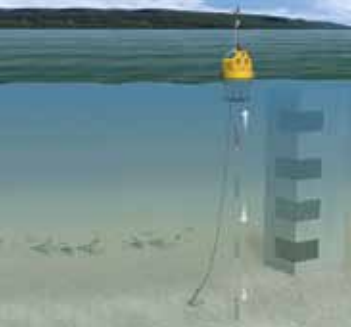


- **Small Buoy** for short-term, project-based deployments
- Integral deployment tube protects multiparameter water quality sonde
- Submersible rechargeable battery pack acts as buoy ballast weight
- One base station collects data from network of buoys
- Easily deployable

PISCES

- Mobile, towable monitoring platform for river and high-current applications
- Meteorological sensor and current meter options
- Easy to deploy





Quick Links
ysi.com/econet
ysi.com/profilers
ysi.com/ecomapper

Integrated Systems

YSI Integrated Systems can quickly deliver proven standard solutions or work with you to develop a custom solution for unique monitoring applications.

Applications

Remote data delivery
 Real-time alerts
 Reservoir monitoring
 Aquaculture
 Algal bloom monitoring
 Discharge
 Bottom mapping
 Drinking water intake

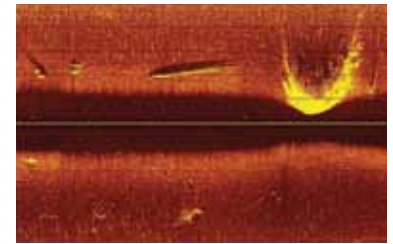
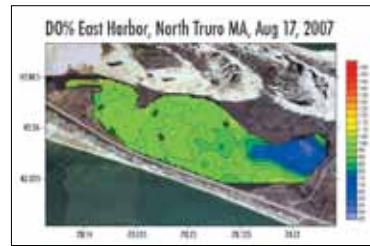
Parameters

Water quality
 MET
 Currents
 Nutrients
 Bathymetry
 Side-scan sonar



EcoNet™

- Delivers remote data to web or workstation
- Automated data reports, alarms, and alerts
- No programming necessary; changes made through graphic interface
- Add up to 15 sensors and more than 50 parameters to a single station
- Simplifies network with hosting, delivery, reporting, and maintenance services from single supplier



EcoMapper™

- Completely autonomous underwater vehicle
- Deployable by one person
- High-resolution mapping of water quality, current, and bathymetry over large areas
- Easy-to-use mission planning software
- Side-scan sonar

Vertical Profiling System

- Monitor water quality at various depths
- Continuously monitor stratification and mixing without trips to the field
- Detect short-term events—storms, sediment transport, algal blooms—anywhere in water column
- Automated, unattended profiling helps track changes with complete data set
- Reduce equipment maintenance by using one sonde to profile entire water column



800 363 3269 US
+1 508 748 0366



Quick Links
yssystem.com
yssystem.com
yssystem.com

Services

A successful environmental monitoring project requires more than the right equipment.

YSI's Integrated Systems, Hydrodata, and AMJ Environmental divisions also offer a range of services to help you achieve optimal results.



We can partner with you to provide:

- Project definition
- Site evaluation
- Systems design
- Integration and testing
- Construction and installation
- On-site training
- Data collection and delivery
- Extended support and service contracts
- Project management
- Rental



SeaKeeper 1000™

- Automated underway sampling system
- No crew interaction needed
- Actively contribute to environmental and climate research
- Satellite communication from anywhere in the world
- YSI installs and maintains the system

800 363 3269 US
+1 508 748 0366



Quick Links
waterlog.com

Hydrological Monitoring

Design Analysis Associates, a division of YSI, offers the WaterLOG® instrument series. DAA can partner with you for environmental management projects.

Applications
Water level monitoring
Dams and bridges
Reservoir and tanks
Remote data delivery
Real-time alerts



H-2221 High Data Rate GOES Transmitter

- Highest accuracy radio provides reliable satellite transmissions in extreme environments
- Supports 100, 300 and 1200 PBS
- Menu-driven setup interface
- Low standby power
- Integral GPS with random and set timed transmissions
- Upgradable to future protocols such as NOAA/NESDIS V2.0



H-5000 Datalogger

- Easy-to-read color display with LED backlight and touch screen
- Easy-to-use graphical user interface with built-in help menus
- 32-bit, 192-MHz, Arm-9 processor
- LINUX operating system
- 1 Gb internal data logging memory (expandable to 4 Gb)



H-3611 Radar

- Non-contact level measurement eliminates need for stilling wells and other infrastructure
- Not susceptible to damage from floating debris
- Built-in LCD display for monitor and setup
- Less maintenance than tide and stage measurement sensors
- Measurement range 131 ft (40 meters)



H-355 Bubbler

- Single unit replaces gas purge bubblers
- Depths to 115 ft (50 psi)
- No needle valve or diaphragm problems
- Automatic or manual controlled purge
- Dependable mass flow rate control
- Low power operation
- Nitrogen tank not required



YSI has dedicated staff around the world to partner with you. To order or for more information, contact us at 800 897 4151 or www.ysi.com.



Y S I Integrated Systems & Services

Y S I Hydrodata



ISO 9001

ISO 14001

(Yellow Springs facility)

All trademarks herein are registered to YSI Incorporated unless otherwise noted.

©2010 YSI Incorporated
Who's Minding the Planet?[®]
E58-05 0610 Printed in the USA

1 YSI Incorporated

1700/1725 Brannum Lane
Yellow Springs, Ohio 45387
+1 937 767 7241
+1 937 767 9353 fax
environmental@ysi.com

2 YSI Integrated Systems & Services

+1 508 748 0366
systems@ysi.com

3 SonTek/YSI

+1 858 546 8327
inquiry@sontek.com

4 Design Analysis Assoc.

+1 435 753 2212
daa@daa-utah.com

5 YSI Gulf Coast

+1 225 753 2650
gulfcoast@ysi.com

6 AMJ Environmental

+1 727 565 2201
info@amjenviro.com

7 YSI Instrumentos e Servicos Ambientais

8 YSI Hydrodata

European Support Centre
+44 1462 673581
europa@ysi.com
ireland@ysi.com

9 YSI Nanotech

Abu Dhabi
+971 2 56 31316
samer@nanotech.co.jp

10 YSI South Asia

+91 9891220639
sham@ysi.com

11 YSI Nanotech

Japan
+81 44 222 0009
nanotech@ysi.com

12 YSI China

+86 10 5203 9675
beijing@ysi-china.com

13 YSI Hong Kong Ltd

+852 2891 8154
hongkong@ysi.com

14 YSI Australia

+61 7 3162 1064
australia@ysi.com

ECO CALCULATIONS REPORT

YSI Inc. saved the following resources by using Chorus Art paper made with 50% recycled and 25% post-consumer fiber.

trees	energy	greenhouse gas	waste water	solid waste
1	0.5 mil BTUs	324.09 lbs CO ₂	258 gal	43 lbs