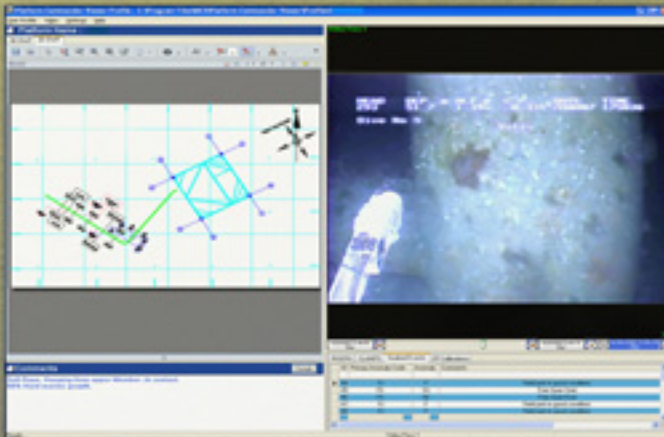
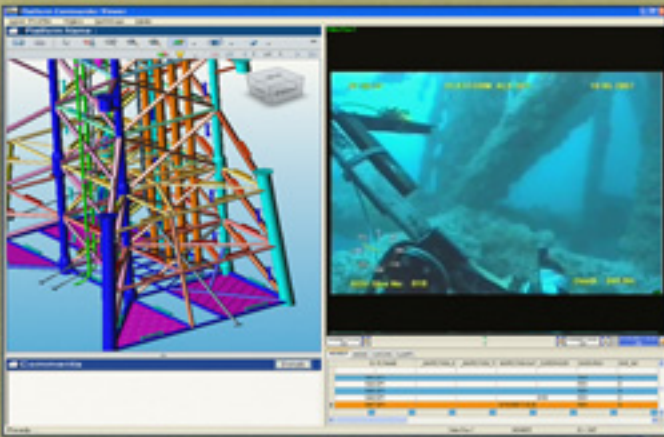


MCS ROV Platform Commander



The leading ROV platform inspection data acquisition, eventing, digital video, processing, charting and reporting software package that presents more comprehensive, integrated and easy to use platform inspection database system.

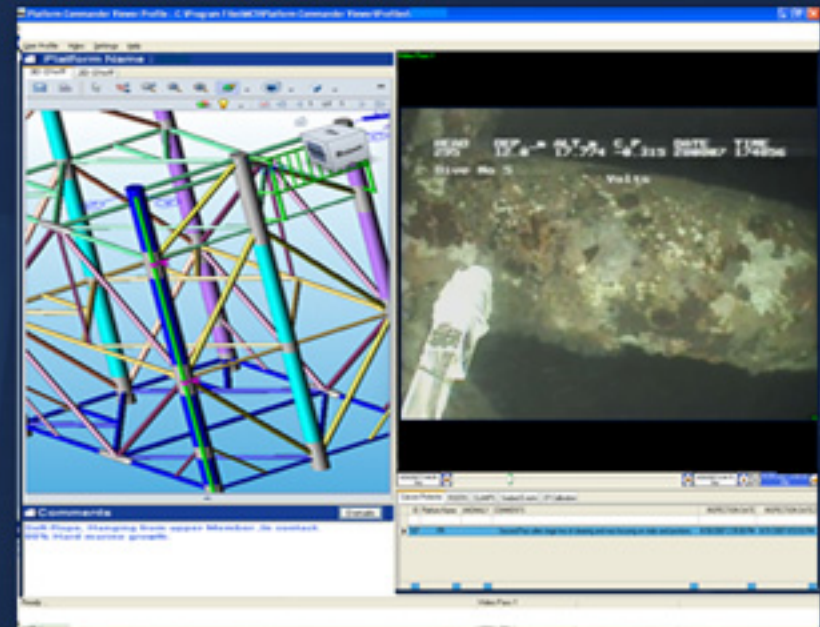
ROV Platform Inspection Software consists of two modules

- MCS ROV Platform Commander.
- MCS ROV Platform Commander Viewer.

MCS ROV Platform Commander

Features & Benefits

- ROV Platform Commander records digital video captured by the ROV Cameras for the structure members, risers, clamps and anodes.
- Enables users to feed the system with all platform inspection data (anomalies, events, cp readings, etc.).
- Links all the events and digital video captured by the ROV cameras to members, risers, clamps and anodes.
- Generates 3D models, plans or elevations for any required level, from any approach angle.
- Allows querying structure entities' data (ex: steel members, risers, anodes, clamps etc) using 3D coordinates in AutoCAD or the attributes in the database (ex: cathodic protection readings, wall thickness measurements, etc.).
- ROV Platform Commander helps survey contractors reduce time and cost in platform inspection jobs through:
 - Data acquisition from multiple simultaneous ROV spreads.
 - Eliminating the lost time in identifying the inspected face and level due to easy navigation of the platform 3D model.
 - Ensuring the scope of work is totally accomplished by running built-in checks on the acquired data at the end of the job.



MCS ROV Platform Commander Viewer

Features & Benefits

- ROV Platform Inspection Data Viewer presents Platform inspection outputs in an interactive interface.
- Integrates platform inspection data :
 - 3D model of the platform.
 - Digital video stream(s) captured by ROV camera(s).
 - Members' inspection data, such as CP readings, UT measurements, and FMD tests.
 - Members' inspection comments.
- Data filtering and querying can be performed by few clicks such as:
 - Identify flooded members in a platform.
 - Metallic debris in contact with structure.
 - Damages to the members.
 - CP readings larger than a certain value.
 - Depleted anodes.
- The user can zoom, rotate the 3D model and click on structure members to access detailed event and video data.
- Saves time spent in searching paper reports and drawings.
- Allows easy information sharing between company departments.
- Best video compression ratio with the same picture quality (0.15 GB/hour per camera at 720*576 PAL resolution).
- Easy data handling (digital video copying and portability).
- Data storage savings (no need for expensive NAS or SAN).
- Data browsing over networks is practical without bandwidth consumption.
- Allows browsing of historical surveys on the same jackets at the same time with recent surveys from the same viewer.
- Can be triggered from the Web GIS Commander to browse all the platform inspection data.

ROV Platform Commander Data Flow

